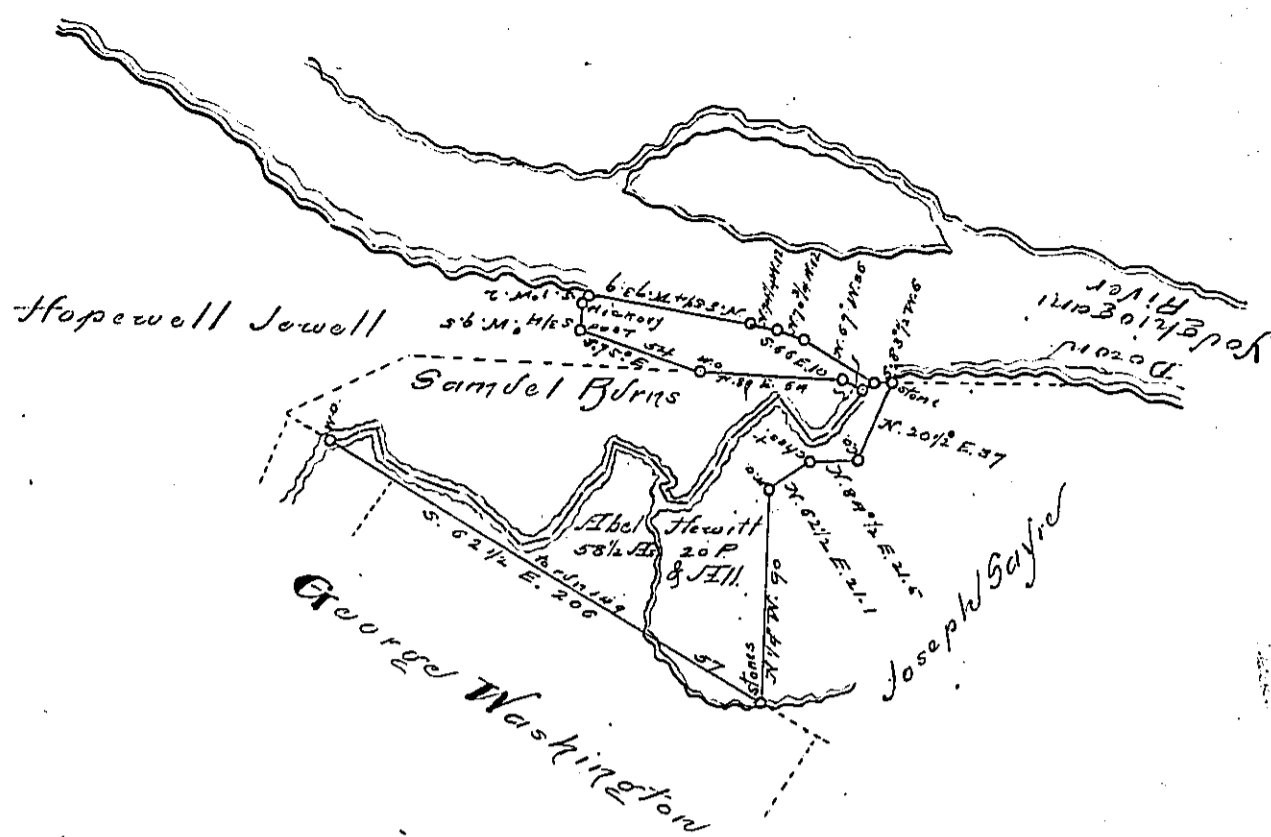


Water Courses up the Mill run.

- S. 27° W. 19
- S. 57° W. 6
- N. 57° W. 20.5
- S. 52½° W. 28.0
- S. 22° W. 13.3
- S. 35° W. 10.1
- S. 7½° W. 6.1
- N. 41° W. 9.3
- N. 62¼° E. 1.4
- N. 42½° W. 12.6
- N. 70½° W. 8.9
- S. 6¼° W. 12.5
- S. 37¼° W. 11.5
- S. 30° W. 23
- S. 68¼° W. 14.4
- N. 47¼° W. 9.5
- N. 52° W. 19.3
- N. 80° W. 28.9
- N. 50° W. 14.0
- N. 24° W. 13
- S. 50° W. 5.0
- S. 87° W. 13.8

316.7 to a W.O.



Situated in Franklin and Washington townships Fayette County on the South West ^{obl.} of Goughiogueni River and Surveyed the 21st day of October 1814 in pursuance of a Warrant Granted to Abel Hewitt dated February 7th 1814. There is a field, meadow and other lots cleared, and a young orchard on the premises, said Abel Hewitt resides with his family on the premises. From the best testimony it appears that the improvement on the said land was begun in the year eighteen hundred and six.

To Richard T. Leech Esq. Surveyor General
 P. Alexander McLean Deputy

IN TESTIMONY that the above is a copy of the original remaining on file in the Department of Internal Affairs of Pennsylvania, made conformably to an Act of Assembly approved the 16th day of February, 1833, I have hereunto set my Hand and caused the Seal of said Department to be affixed at Harrisburg, this

thirtieth day of March 1894.

Thos. Stewart
 Secretary of Internal Affairs.